

Features:

- ◆ True RMS Measurement
- ◆ Scale Interchangeability
- ◆ Non Linear Scale
- ◆ Knife Edge Pointer
- ◆ Glass filled Polycarbonate housing



Specifications

Scale and Pointer	
Pointer	Knife - edge pointer
Pointer deflection	0 to 90°
Scale characteristics	Near Linear above 10% of nominal full Scale value
Scale division	Coarse - fine
Pointer length	34mm 54mm
Over range:	
Ammeters	2 times nominal current
Voltmeters	1.2 times nominal voltage
Scale Interchangeability	Interchangeable

Certifications

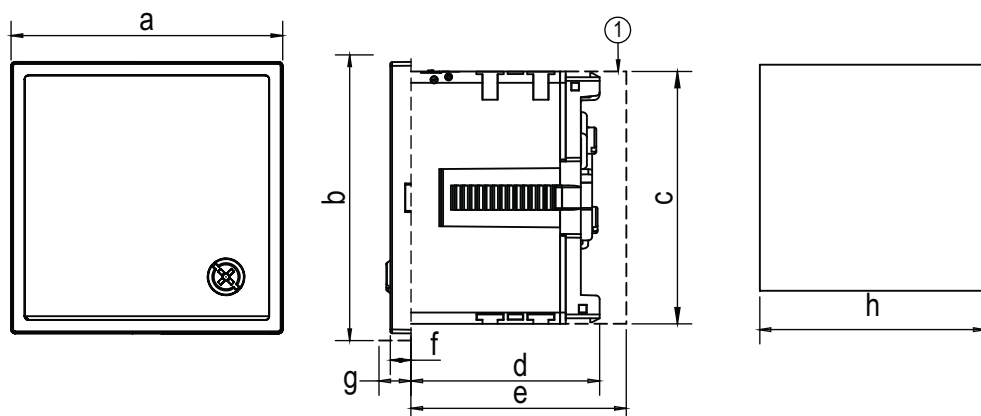
CE RoHS



Electrical Specification

Measured quantity	AC Current
Measuring Current Range	0 to 5A (CT Secondary) Suppress scale : 0 to 5 / 30A (CT Secondary)
Overload capacity	(acc. to IS: 1248 / IEC 51
Continuously	1.2 times rated Current
Short duration	10 times of rated current upto max 5 sec
Power Consumption	Max 0.8VA
Frequency	50 - 60 Hz
Accuracy	Class 1.5
Accuracy	Class 1.5
Over Range	6 times nominal current (for suppress scale)
Dielectric test	2 kV AC for 1 Minute

Dimensions



Product	72x72	96x96
Dimensions (in mm)		
a	72	96
b	74.50	98.50
c	67	90.50
d	50	50
e	60	60
f	5.50	5.50
g	8	8
h	68	92